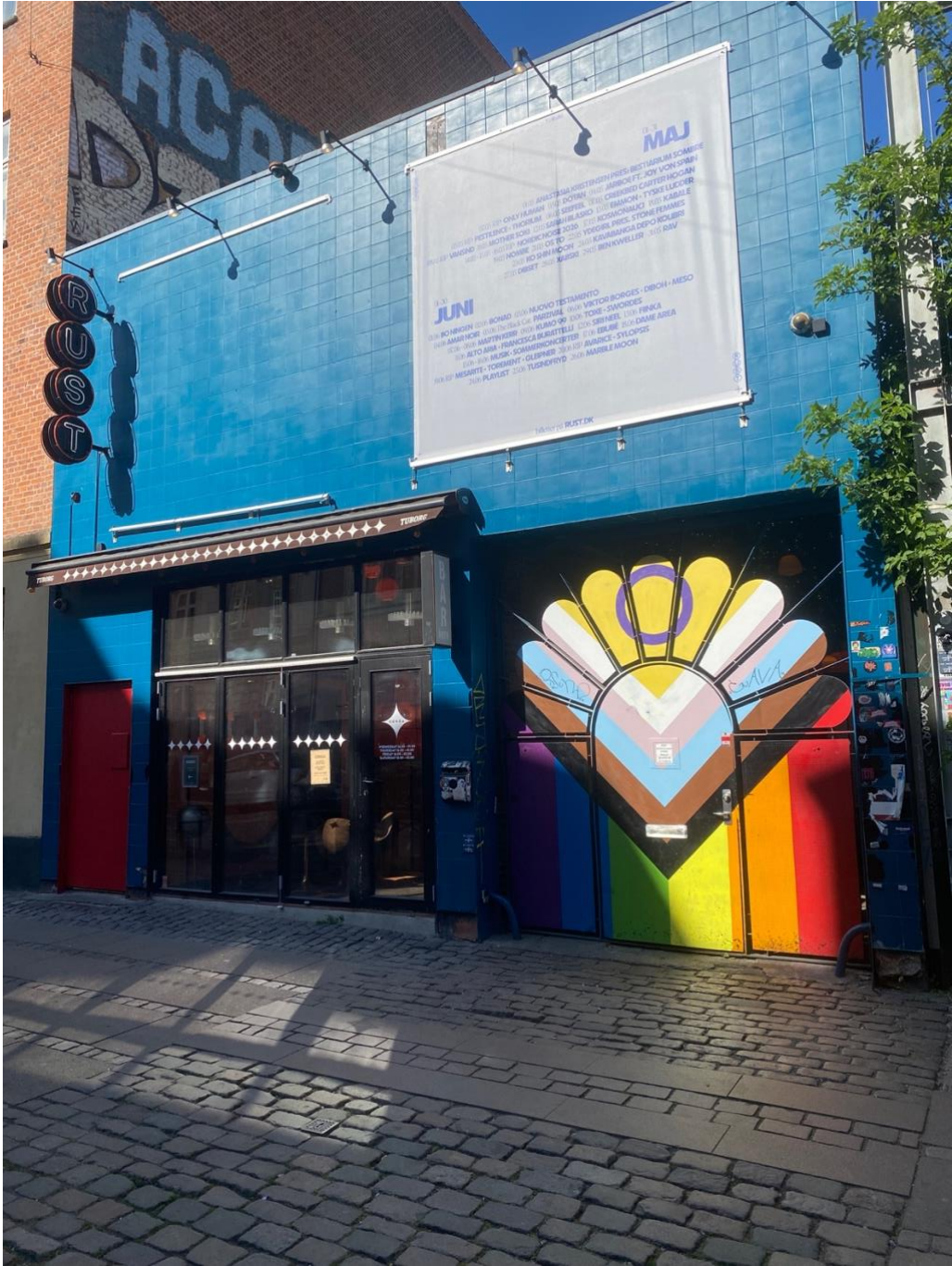


PRODUCTION SPECS

RUST

May 2026



## TABLE OF CONTENT

<b>1. General Info</b>	<b>2</b>
<b>2. Audio</b>	<b>5</b>
2.1. Main PA	5
2.2. Sidefills	5
2.3. Monitoring	5
2.4. Stage Box	5
2.5 CAT-Connections	5
2.7. FOH	6
2.8. Mics & DIs	6
2.9. Mic Stands	6
2.10. WL	7
2.10.1. WL-Frequencies	7
2.11. DJ-Gear	7
2.12. Sound Level	8
<b>3. Illumination</b>	<b>9</b>
3.1. Front:	9
3.2. Stage	9
3.3. Floor	9
3.4. Haze	9
3.5 DMX-Splitter	9
3.6. Dimmer	9
3.7. FOH	9
3.8. Hanging Plot	10
3.9. DMX Patch	11
<b>4. Stage</b>	<b>12</b>
4.1. Stage	12
4.2. Proscenium	12
<b>5. Power</b>	<b>13</b>
<b>6. Backline</b>	<b>14</b>
<b>7. Pictures</b>	<b>15</b>
7.1. Main Entrance	15
7.2. Load in /out (Regular)	15
7.3. Load Out (Disco)	16
7.4. Backstage	16
7.5. From Audience	18
7.6. From Stage	18
7.7. FOH	19
7.8. In Action	19

## 1. GENERAL INFO

Address	Guldbergsgade 8 DK-2200 København N  <a href="https://goo.gl/maps/vrKnmP4KUetQ5DG86">https://goo.gl/maps/vrKnmP4KUetQ5DG86</a>  Load in is same address.
Backstage	Lounge area Refrigerator Toilet Well-lit dressing room w/full-body mirror
Capacity	220 pax (200 tickets are sold, 20 reserved for guest list)
Contact	Booking, Economy, PR & Tickets: Lars Paludan <a href="mailto:larsp@rust.dk">larsp@rust.dk</a>  Advance, Tech: Jesper Krabbe <a href="mailto:advance@rust.dk">advance@rust.dk</a>

<p>Low Emission Zone</p> <p>Diesel Passenger Cars</p> <p>Diesel Vans (Up to 3.5 Tons)</p> <p>Heavy Vehicles (Lorries &amp; Buses)</p> <p>Important final check</p>	<p>RUST is situated inside the Copenhagen Central Low Emission zone.</p> <p>Full rules, guides and registration <a href="#">here</a></p> <p>Registration is only required if first registered before January 1, 2011. Because yours is newer, no action is needed.</p> <p>Registration is only required if first registered before September 1, 2016. If your van is between 2011 and August 2016, you <b>must</b> register it on the Miljoezoner Portal. If it is newer than September 2016, you are clear.</p> <p>Registration is required if first registered before January 1, 2015.</p> <p>While you do not need to register a post-2011 passenger car, your diesel vehicle must physically comply with the zone rules (it must be at least Euro 5 or fitted with a diesel particulate filter).</p>
<p>Merchandise sales</p>	<p>RUST has a designated merch sales area, strategically placed adjacent to the bar. Please note that lighting in this area is limited.</p> <p>For a fee of DKK 1,500 (€200) excl. VAT (25%)*, RUST can provide one staff member to handle merch sales (max. 4 hours).</p> <p>For a fee of DKK 1,500 (€200) excl. VAT (25%)*, RUST can provide a payment solution for merch sales.</p> <p>*VAT-registered businesses in other EU member states may be supplied without Danish VAT, subject to applicable reverse charge and intra-community supply rules.</p>
<p>Misc</p>	<p>On Fridays and Saturdays from 23:00, RUST transitions into nightclub operation. Load-out must therefore begin immediately after the concert and will be handled as a "Disco Load-Out" through the back entrance only.</p>

Parking Facilities	<p>RUST does not provide any on-site parking facilities. The entire surrounding area is paid street parking* at the production's own expense. We recommend using the EasyPark app (Get it <a href="#">here</a>)</p> <p>Unfortunately, RUST is not able to facilitate parking for nightliners. Where possible, we are happy to assist in identifying suitable parking options, but all parking arrangements, permits, costs, and responsibilities remain solely with the production.</p> <p>*Subject to local parking regulations.</p>
Photo	<p>Attending a concert at RUST is first and foremost an audience-first experience.</p> <p>Should you bring your own photo team, we ask you to respect our photo guidelines:</p> <ul style="list-style-type: none"> <li>• Always consider the experience of the audience first and foremost.</li> <li>• Do not use flash when taking pictures and make an effort not to get in the way of artists, crew, and audience members.</li> <li>• Photo positions in front of the audience are only permitted during the first 3 songs of the set.</li> </ul> <p>Please advise us ahead of the show if you wish to bring your own photo team, so we can arrange a secure place for them to store their gear during the show.</p>
Smoking	<p>RUST is a non-smoking venue.</p> <p>Smoking is only permitted outside or in designated smoking areas.</p> <p>Smoking inside the venue, outside of designated smoking areas, will result in an additional cleaning fee of DKK 5,000 (€670).</p>
Social media	<p>Facebook: <a href="https://www.facebook.dk/rustkbh">https://www.facebook.dk/rustkbh</a>  Instagram: @rustkbh</p>
Stagehands	0
WiFi	<p>SSID : Rust_2g  Password: rust352452</p>

## 2. AUDIO

### 2.1. MAIN PA

Sub	4x FBT Mitus 118SA
Top	4x FBT Horizon VHA 406a

### 2.2. SIDEFILLS

	2x FBT Ventis 206A
--	--------------------

### 2.3. MONITORING

Drum sub	0
IEM	0
Wedges	5x FBT Ventis 112MA Dispersional pattern: Nominal 90° Frequency range : 55-20.000 Hz (-6dB) SPL : 133dB  1x TurboSound TXD 12M Dispersional pattern: 40° (H) x 70° (V) (-6dB) Frequency range : 65-20.000 Hz (-6dB) SPL : 122dB

### 2.4. STAGE BOX

	2x Allen & Heath DX168
--	------------------------

### 2.5 CAT-CONNECTIONS

Guest lines	1x Shielded CAT5e (Downstage, left) 1x Unshielded CAT5e (Downstage, left)
House lines	1x Unshielded Cat5e (Upstage, stage left)

## 2.7. FOH

Console	1x Allen & Heath SQ-6
Measurements	Width, total : 1.3 m Depth, total : 1.2 m Table, width: 0.8m Table, depth: 0.7m
Stereo Mini Jack	Yes
Talkback	Yes

## 2.8. Mics & DIs

Condenser	1x Audix Fi5 2x Røde NT-5 1x Shure sm94
DI	5x BSS AR133 5x LD Systems LDI 02
Dynamic	1x AKG D112 2x Audix i5 1x Shure beta52A 3x Shure beta58A 3x Shure sm57 3x Shure sm58
PZM	1x Shure beta91A

## 2.9. MIC STANDS

Low w/boom	1x Adam Hall, large round base 1x K&M, large round base 3x K&M, small round base
Tall	2x K&M, large round base
Tall w/boom	6x K&M, tripod

## 2.10. WL

IEM	0
Mics	0

### 2.10.1. WL-FREQUENCIES

<u>Channel</u>	<u>Frequency range</u>
21	470.0 – 477.0
24	495.0 – 501.0
26 – 30	511.0 – 549.0
32	559.0 – 565.0
34	575.0 – 581.0
36 – 38	591.0 – 613.0
43 – 48	647.0 – 695.0

## 2.11. DJ-GEAR

CD-Players	2x Pioneer CDJ-2000 Nexus 2x Pioneer CDJ-3000
Desk	1x Pioneer DJM-A9 1x Pioneer DJM-900 Nexus
Misc	Network switch & CAT link
Turntables	2x Technics SL-1210

## 2.12. SOUND LEVEL

dB-limit	<p>103db(A)leq15</p> <p>All contracts at RUST are entered into under the framework agreement of Dansk Live . Repeated violations of RUST's fixed sound level limit of 103 dB(A) Leq15, as stated in the venue specifications, may result in deductions from the artist fee in accordance with this agreement.</p>
----------	---

### 3. ILLUMINATION

#### 3.1. FRONT:

Conventional	2x CCT Minuette Z0642
--------------	-----------------------

#### 3.2. STAGE

Conventional	6x Par56, o/w only
Intelligent	8x Robe LEDbeam 150

#### 3.3. FLOOR

Other	4x Mirror balls
-------	-----------------

#### 3.4. HAZE

	1x Smoke Factory Tour Hazer II
--	--------------------------------

#### 3.5 DMX-SPLITTER

	1x LSC DMX Splitter
--	---------------------

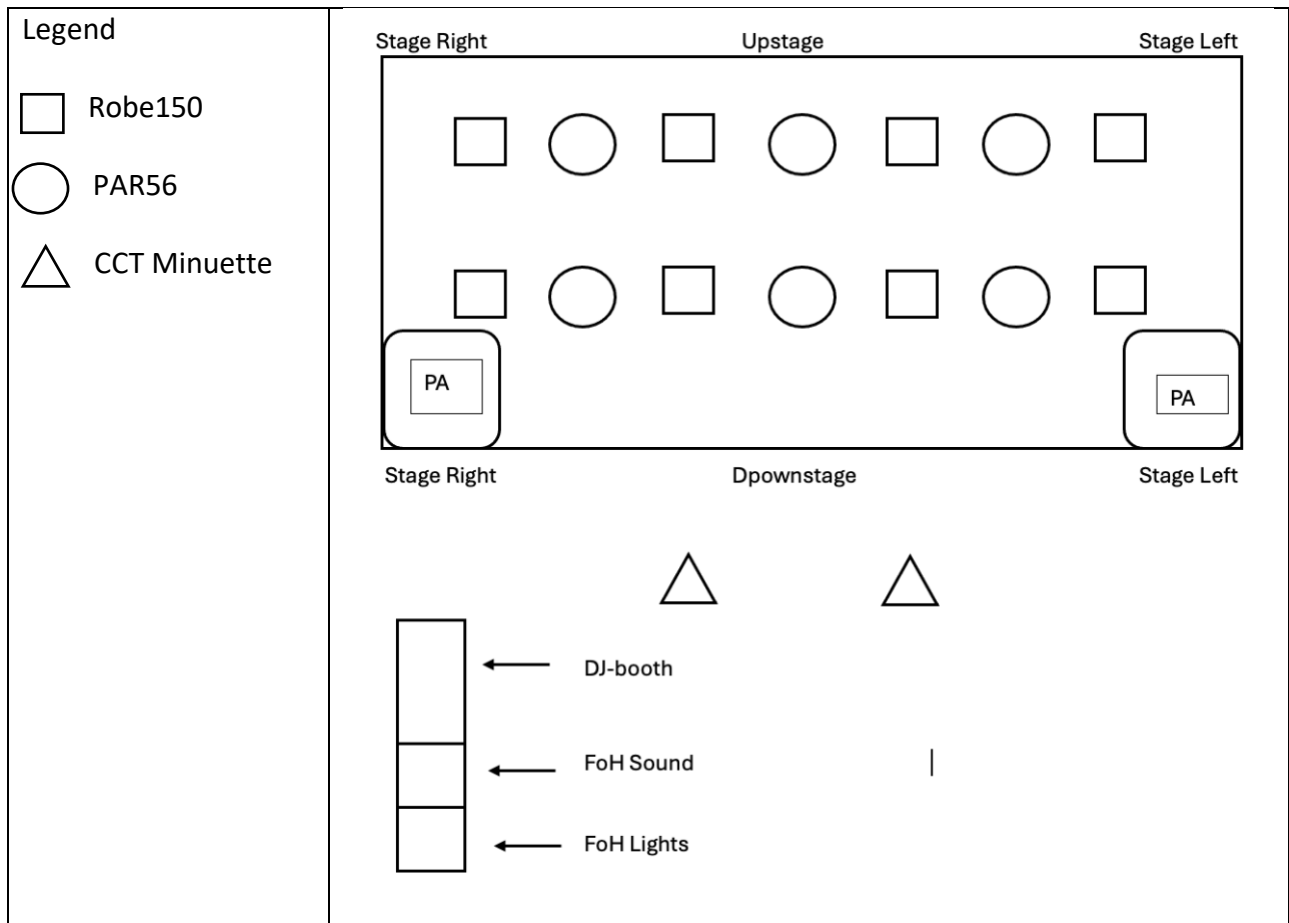
#### 3.6. DIMMER

	1x PULSAR Datapack III (12 ch)
--	--------------------------------

#### 3.7. FOH

Console	1x Laptop with touch screen 1x ChamSys MagicQ on PC 1x ChamSys fader wing
DMX-lines	1
Measurements	Width, total : 1.3m Depth, total : 1.2m Width, table: 0.7m Depth, table: 0.6m

### 3.8. HANGING PLOT



### 3.9. DMX PATCH

	<p>01-001 – CCT Minuette Z0642 – 1 (1)  01-001 – CCT Minuette Z0642 – 2 (2)  01-003 – Par64 – 1 (11)  01-004 – Par64 – 2 (12)  01-005 – Par64 – 3 (13)  01-006 – Par64 – 4 (14)  01-007 – Par64 – 5 (15)  01-008 – Par64 – 6 (16)  01-009 – Empty Dimmer  01-010 – Empty Dimmer  01-011 – Empty Dimmer  01-012 – Empty Dimmer</p> <p>01-050 – Robe LEDbeam 150 – 1 (21)  01-072 – Robe LEDbeam 150 – 2 (22)  01-094 – Robe LEDbeam 150 – 3 (23)  01-116 – Robe LEDbeam 150 – 4 (24)  01-138 – Robe LEDbeam 150 – 5 (25)  01-160 – Robe LEDbeam 150 – 6 (26)  01-182 – Robe LEDbeam 150 – 7 (27)  01-204 – Robe LEDbeam 150 – 8 (28)</p> <p>01-500 – Smoke Factory Haze (41)  01-501 – Smoke Factory Fan (42)</p>
Robe 150LEDbeam	Mode 1

#### 4. STAGE

##### 4.1. STAGE

Clearance	2.30m
Depth	3.35m
Height	0.60m
Width	5.50m

##### 4.2. PROSCENIUM

Height	2.30m
Depth	4.1m

**5. POWER**

Available for guests	1x CEE 16/3 @380V
----------------------	-------------------

## 6. BACKLINE

Terms & Conditions	<p>Apart from a few guitar and keyboard stands, RUST does not provide in-house backline.</p> <p>We refer backline rentals to <a href="#">SoundForce</a> Contact: Christian — cd@soundforce.dk</p> <p>Due to insurance and liability considerations, the setup and pack-down of backline remain the responsibility of the production.</p> <p>For a fee of DKK 1,060 (€140) excl. VAT (25%)*, RUST can handle backline setup.</p> <p>For a fee of DKK 1,060 (€140) excl. VAT (25%)*, RUST can handle backline pack-down.</p> <p>If RUST is engaged to carry out setup or pack-down of backline, responsibility and insurance liability for these tasks transfer to RUST for the duration of the work.</p> <p>If backline pack-down is not completed by the production, RUST will arrange external crew to complete the work and recall the external cleaning service as required to prepare the venue for the next production.</p> <p>The production will be charged for pack-down, (DKK 2,000 (€265) excl. VAT (25%)*(Backline service including short-notice fee)), and additional cleaning costs (DKK 5,000 (€670) excl. VAT (25%)*).</p> <p>In such cases, full responsibility and insurance liability remain with the production.</p> <p>*VAT-registered businesses in other EU member states may be supplied without Danish VAT, subject to applicable reverse charge and intra-community supply rules.</p>
--------------------	---

## 7. PICTURES

### 7.1. MAIN ENTRANCE



### 7.2. LOAD IN /OUT (REGULAR)

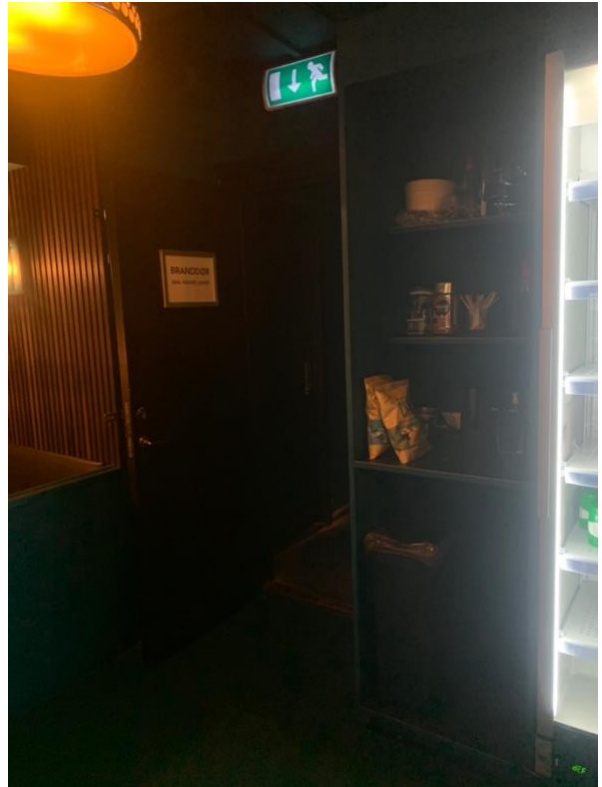
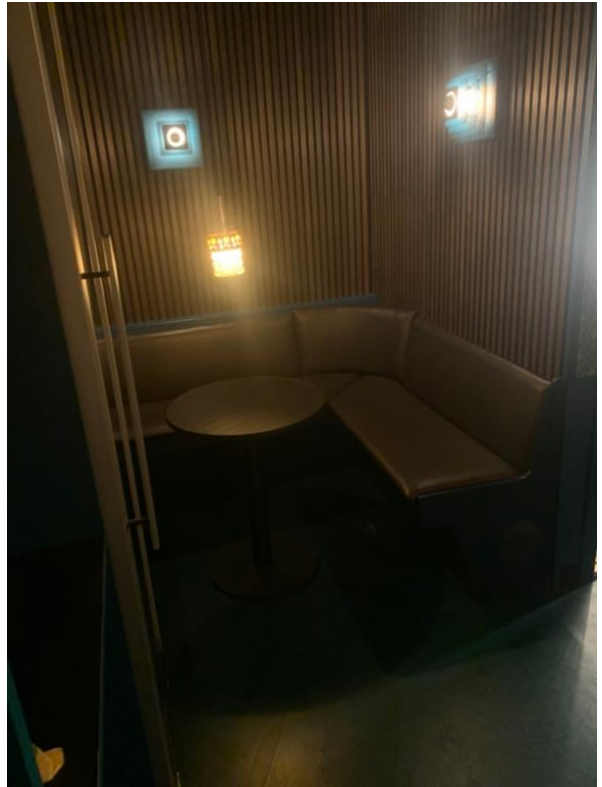


7.3. LOAD OUT (DISCO)



7.4. BACKSTAGE





7.5. FROM AUDIENCE



7.6. FROM STAGE



7.7. FOH



7.8. IN ACTION

